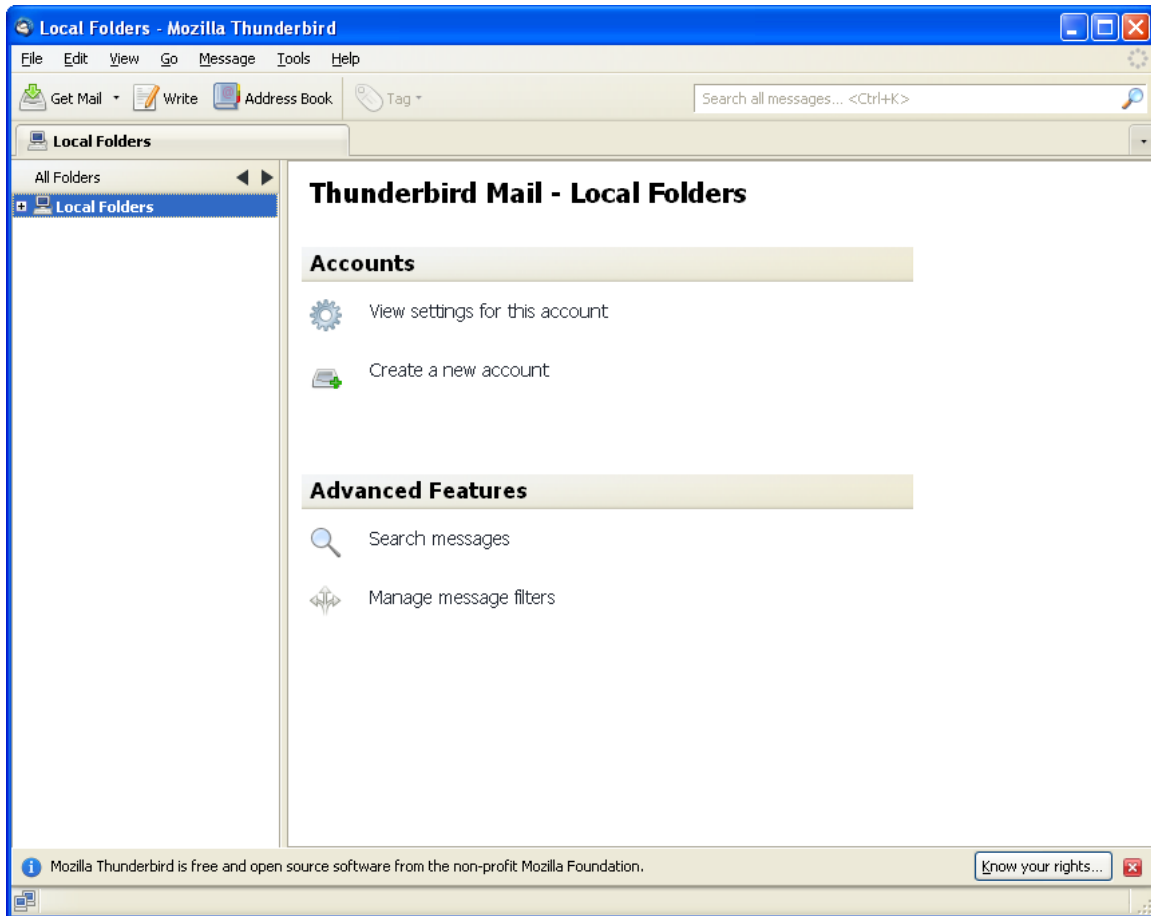


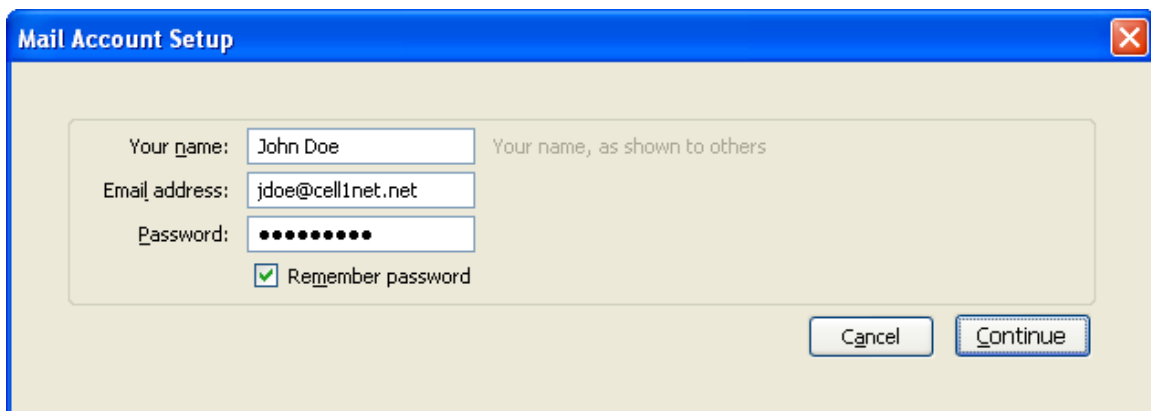
Mozilla Thunderbird E-mail Setup

See page 4 to **troubleshoot** an existing account.

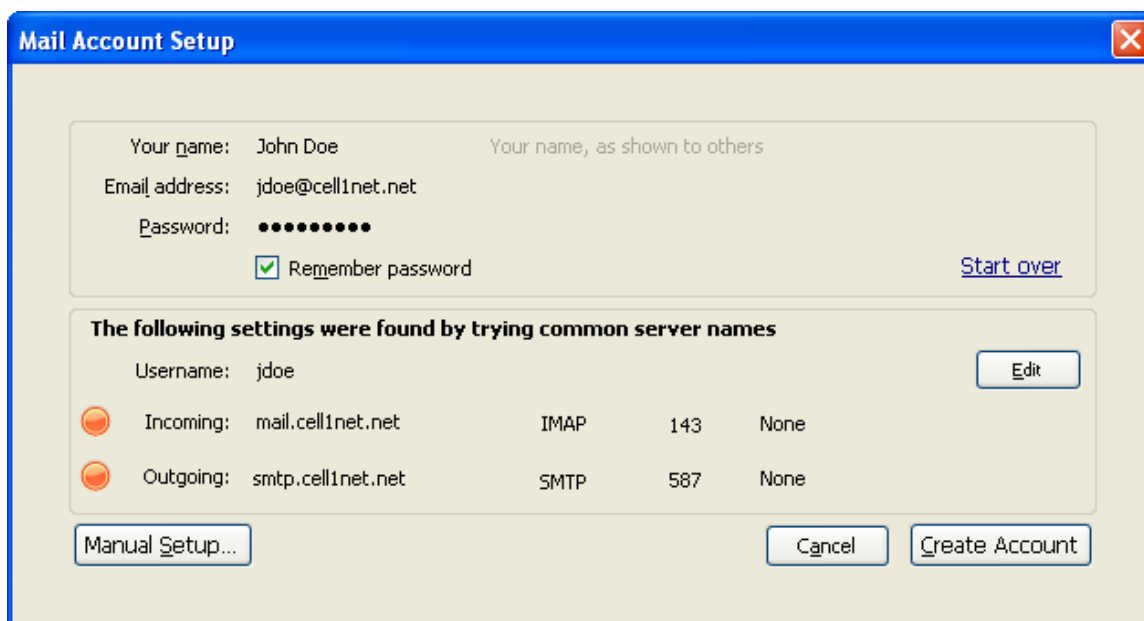
1. Open Mozilla Thunderbird Mail.
2. Click on “Create a new account” to add a new E-mail account.



3. Enter your name, E-mail address, and password. Make sure the box in front of “Remember Password” is checked. Click “Continue” after the information is entered.



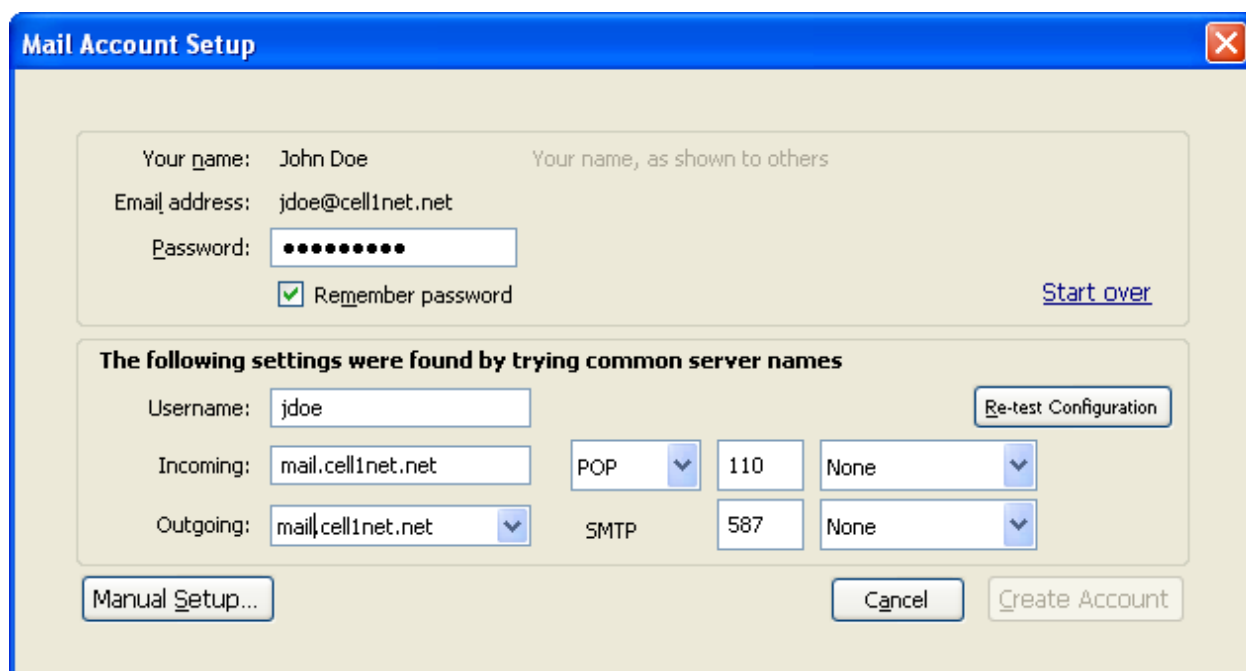
4. Although it will try to find the settings, they won't be correct. Press the "Edit" button after it completes trying to find them.



The screenshot shows the "Mail Account Setup" dialog box. It contains the following information:

- Your name: John Doe (Your name, as shown to others)
- Email address: jdoe@cell1net.net
- Password: [Redacted]
- Remember password
- [Start over](#)
- The following settings were found by trying common server names**
- Username: jdoe (with an [Edit](#) button)
- Incoming: mail.cell1net.net, IMAP, 143, None
- Outgoing: smtp.cell1net.net, SMTP, 587, None
- Buttons: [Manual Setup...](#), [Cancel](#), [Create Account](#)

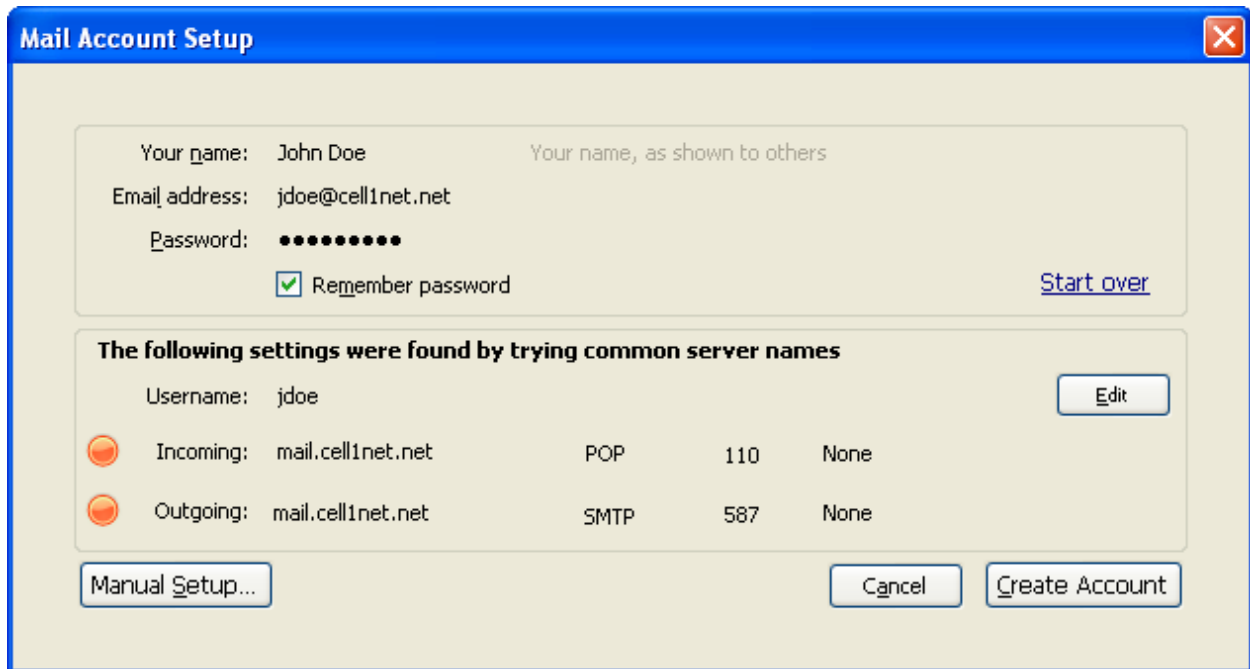
5. Change the Incoming and Outgoing server settings to what is shown below. After making the appropriate changes, press the "Re-test Configuration" button.



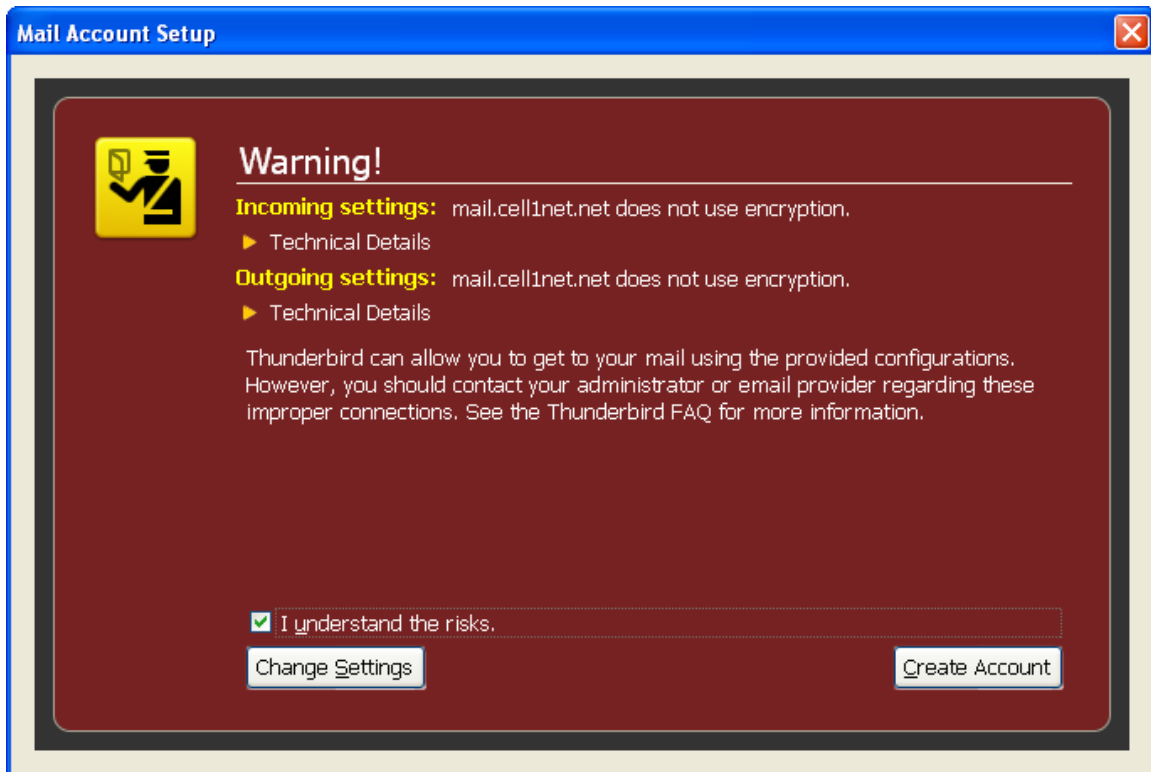
The screenshot shows the "Mail Account Setup" dialog box with the following configuration options:

- Your name: John Doe (Your name, as shown to others)
- Email address: jdoe@cell1net.net
- Password: [Redacted]
- Remember password
- [Start over](#)
- The following settings were found by trying common server names**
- Username: jdoe (with a [Re-test Configuration](#) button)
- Incoming: mail.cell1net.net, POP, 110, None
- Outgoing: mail.cell1net.net, SMTP, 587, None
- Buttons: [Manual Setup...](#), [Cancel](#), [Create Account](#)

6. When you see the following screen, press the “Create Account” button.

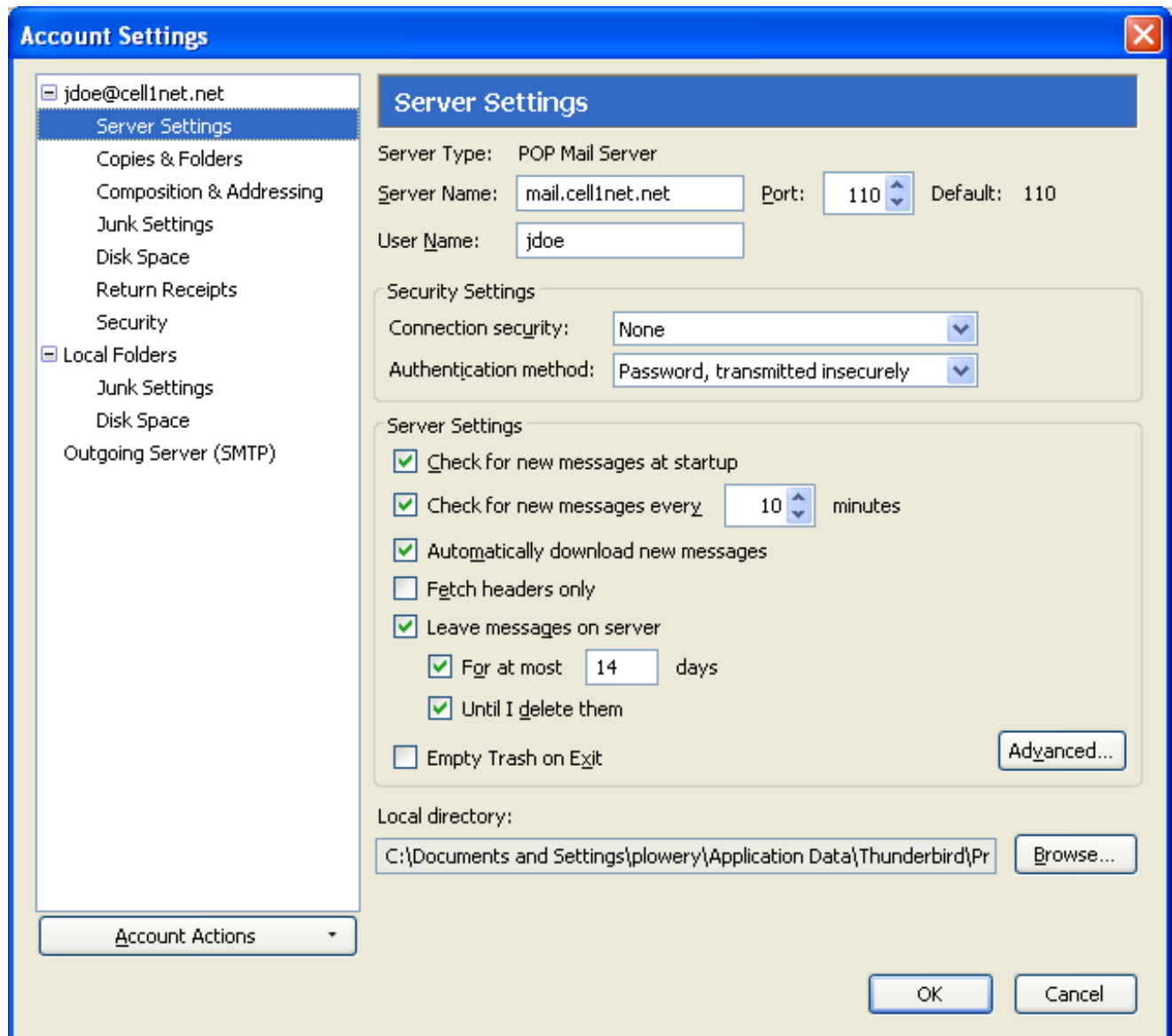


7. You will see the following Warning screen. Make sure to check the box in front of “I understand the risks” and press the “Create Account” button. The e-mail setup is now complete. Mozilla Thunderbird Mail will now connect to check for any messages. The following page will help you troubleshoot if you come across any errors.



Troubleshooting E-mail Settings

1. From the inbox, click Tools then Account Settings at the top of the screen.
2. Check the Incoming Server under “Server Settings” and make sure everything is correct.



3. Click on “Outgoing Server (SMTP)” to make sure everything is configured as shown below. Click “Ok” when you are done.

